



INDEPENDENT
DOUBLE
STACKER WITH PIT

DUPLO





DUPLO COMES

in three versions: Duplo 30 T, Duplo 25/2 and Duplo 20/2 T.

The entire machine is fully galvanized, both parking platform and roof.

Ideal for outdoor installation such as in gardens or garage access zones, Duplo can double up parking spaces or hide vehicles completely underground, keeping the residential space free of clutter.





THE PLATFORM

can also be used for full size vehicles or those with a long wheel base. Easy parking is one of the main prerogatives of the Duplo line.

THE ROOF HAS AN ACCESS HATCH

for maintenance, control and emergency access. This opening makes inspection easier, even during closed parking of unit.



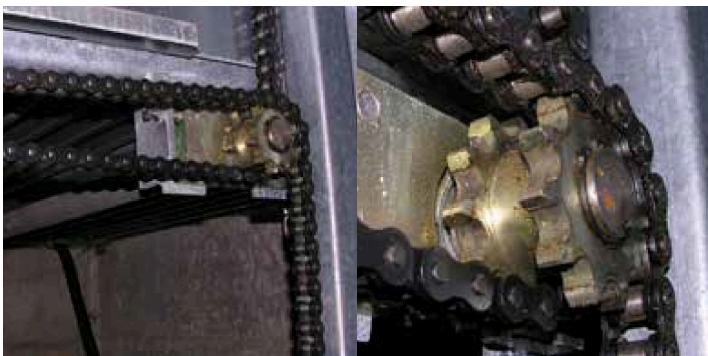
THE UNIT HAS TWO TORSION BARS,

one for each pair of columns, located on the short sides. In this case the torsion bars are part of the system of equalizing chains that ensure perfect alignment of the machine, preventing any tilting during movement.



THE DETAIL SHOWS

that the system of chains is doubled for each long side of the unit, engaging completely around the notched torsion bar pinion. By keeping the chains under tension, the system cannot tilt.



AS A WHOLE,

the system of chains makes the unit perfectly safe against any problems that could affect stability.

THE UNIT ALSO HAS

an electromagnetic rack connection block that sets the unit in safety mode at any height.

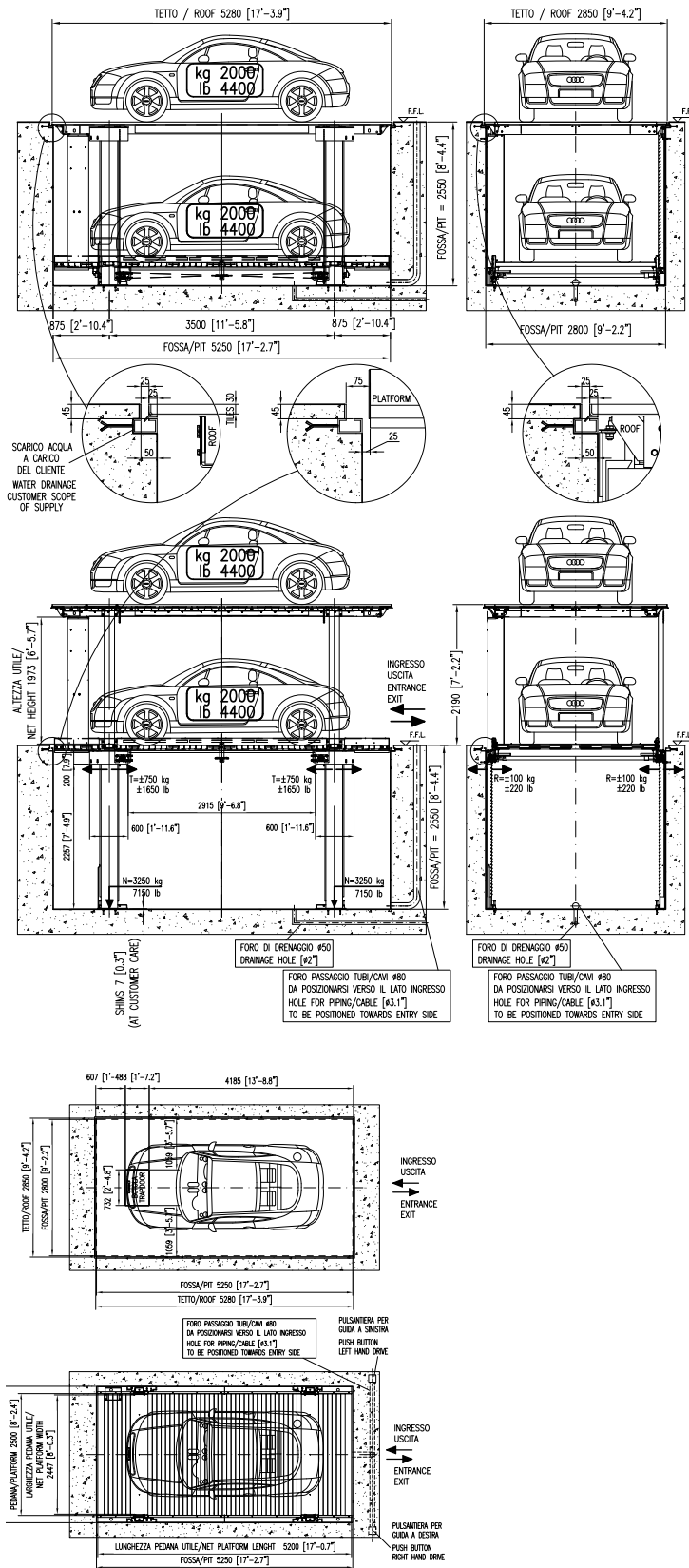
Each column has this system.

The most obvious result of this is that the vehicle/s positioned on the platforms is/are absolutely safe.



DUPLO

DUPLO 20-2 T



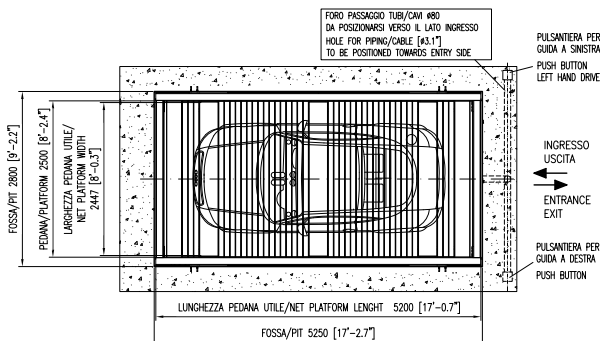
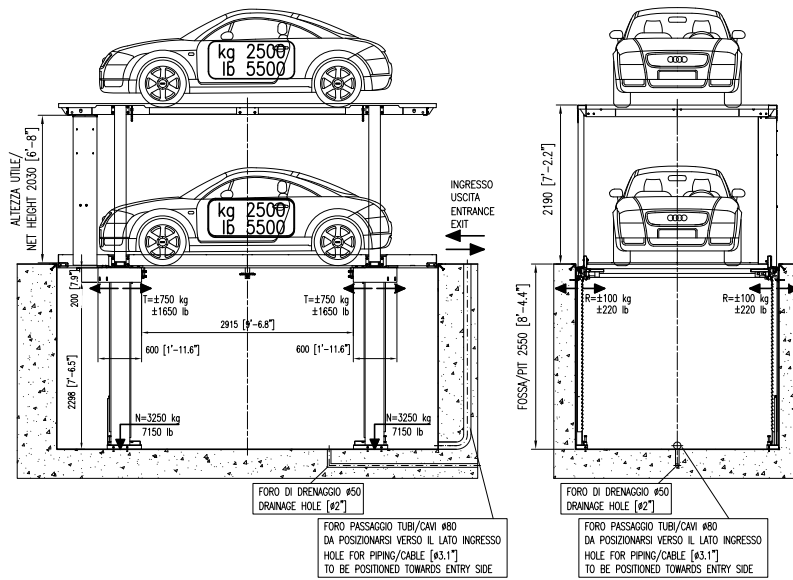
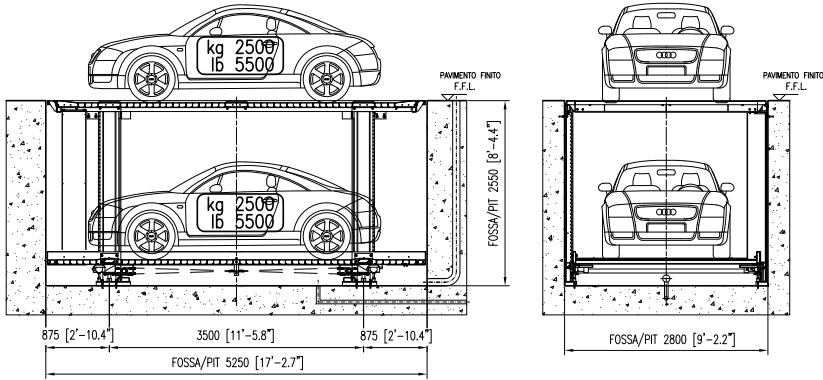
| PEDANA (mm) PLATFORM (feet) | FOSSA (mm) PIT (feet) | LARGHEZZA PEDANA UTILE/ NET PLATFORM WIDTH (mm-feet) |
|--------------------------------|--------------------------|---|
| 2200 / 7'-2.6" | 2500 / 8'-2.4" | 2147 / 7'-0.5" |
| 2500 / 8'-2.4" | 2800 / 9'-2.2" | 2447 / 8'-0.3" |
| 2700 / 8'-10.3" | 3000 / 9'-10.1" | 2647 / 8'-8.2" |

DUPLO 20-2 T - PEDANA/PLATFORM 2500x5200 - CENTRL. DX

4016050340_E

DUPLO

DUPLO 25-2 T



| PEDANA (mm) PLATFORM (feet) | FOSSA (mm) PIT (feet) | LARGHEZZA PEDANA UTILE/ NET PLATFORM WIDTH (mm-feet) |
|--------------------------------|--------------------------|---|
| 2200 / 7'-2.6" | 2500 / 8'-2.4" | 2147 / 7'-0.5" |
| 2500 / 8'-2.4" | 2800 / 9'-2.2" | 2447 / 8'-0.3" |
| 2700 / 8'-10.3" | 3000 / 9'-10.1" | 2647 / 8'-8.2" |

4016050400_A
 DUPLO 25/2

| | Capacity | Standard Lifting Height | Max Lifting Height | Minimum Platform | Standard Platform | Max Platform | Platform distance | Pit | Power | Speed | Power supply | Standard Weight | Notes |
|--------------|-------------------|-------------------------|--------------------|------------------|-------------------|------------------|-------------------|-----------|--------|------------|---------------|-----------------|---|
| DUPLO 30 T | 3.000 kg. | 2.190 mm | 2.190 mm | 2.200x5.200 mm | 2.500 x 5.200 mm | 2.700x5.200 mm | 2.010 mm | 2.500 mm | 2,5 kw | 0,03 m/s | 400 v / 50 hz | 2.850 kg. | tileable roof; max 70 kg/m ² |
| | 6.608 lbs | 86,2 inch | 86,2 inch | 86.6x204.7 inch | 98.4x204.7 inch | 106.3x204.7 inch | 79,1 inch | 79,1 inch | 3,4 hp | 1,2 inch/s | 400 v / 50 hz | 6.278 lbs | tiles on the roof up to 70 kg/m ² |
| DUPLO 25/2 | 2.500 + 2.500 kg. | 2.190 mm | 2.190 mm | 2.200x5.200 mm | 2.500 x 5.200 mm | 2.700x5.200 mm | 2.100 mm | 2.500 mm | 2,5 kw | 0,03 m/s | 400 v / 50 hz | 2.850 kg. | two platforms with two cars |
| | 5.510 + 5.510 lbs | 86,2 inch | 86,2 inch | 86.6x204.7 inch | 98.4x204.7 inch | 106.3x204.7 inch | 82,7 inch | 79,1 inch | 3,4 hp | 1,2 inch/s | 400 v / 50 hz | 6.278 lbs | two platforms for two cars |
| DUPLO 20/2 T | 2.000 + 2.000 kg. | 2.190 mm | 2.190 mm | 2.200x5.200 mm | 2.500 x 5.200 mm | 2.700x5.200 mm | 2.010 mm | 2.500 mm | 2,5 kw | 0,03 m/s | 400 v / 50 hz | 2.850 kg. | platform + tileable roof with two cars |
| | 4.410 + 4.410 lbs | 86,2 inch | 86,2 inch | 86.6x204.7 inch | 98.4x204.7 inch | 106.3x204.7 inch | 79,1 inch | 79,1 inch | 3,4 hp | 1,2 inch/s | 400 v / 50 hz | 6.278 lbs | platform + tiles on the roof up to 70 kg/m ² |

ACCESSORIES

■ STANDARD □ OPTIONAL

| DESCRIPTION | DUPLO 20/2 T | DUPLO 25/2 | DUPLO 30 T | Notes |
|---|--------------|------------|------------|------------------------------|
| Standard colors: BLU RAL 5005 and SILVER RAL 7040 | ■ | ■ | ■ | |
| Loading capacity 3000 kg on the platform with roof with tiles | ■ | | | Tileable roof (max 70 kg/m2) |
| Loading capacity 2.500 Kg (each platform) | | ■ | | |
| Loading capacity 2.000 Kg (each platform) | | | ■ | Tileable roof (max 70 kg/m2) |
| Nr. 4 telescopic electro-hydraulic columns platform lift | ■ | ■ | ■ | |
| Nr. 4 electro magnetic locking stoppers at the level | ■ | ■ | ■ | |
| Nr. 2 platforms with electrostatics galvanized smooth staves | | ■ | | |
| Cover roof tileable predisposition | ■ | | ■ | |
| Cover transitable roof | ■ | | ■ | |
| Complete hot dip galvanized structure | ■ | ■ | ■ | |
| Mechanical compensation with pins and chains | ■ | ■ | ■ | |
| Nr.4 cylinders with parachute valve | ■ | ■ | ■ | |
| Nr 4 safety electro mechanical locks | ■ | ■ | ■ | |
| 1 dead man push button board with key | ■ | ■ | ■ | |
| Nr. 1 Electrical panel board | ■ | ■ | ■ | |
| Nr. 1 hydraulic pump with motor | ■ | ■ | ■ | |
| Nylon Package | ■ | ■ | ■ | |
| screws anchor | ■ | ■ | ■ | |
| Standard power supply 230-400 V/3Ph/50 - 460 V/3Ph/60 | ■ | ■ | ■ | |
| Non standard power supply 220V/1Ph/50-60Hz | □ | □ | □ | |
| Non standard power supply | □ | □ | □ | On request |
| Flashing light | □ | □ | □ | |
| Audible warning kit | □ | □ | □ | |
| Internal lighting led device in low voltage | □ | □ | □ | |
| Nr. 2 Photocells barriers car control forward backward H = 600 mm | □ | □ | □ | |
| Nr. 2Photocells control car's presence on the roof | □ | | □ | |
| Waterproof push button board IP 54 | □ | □ | □ | |
| Push button board in stainless steel | □ | □ | □ | |
| UL certificated system | □ | □ | □ | |
| Non standard power supply | □ | □ | □ | |
| Remote control each receiver | □ | □ | □ | Max.ray 5 mt |
| remote control each transmitter | □ | □ | □ | Max.ray 5 mt |
| Hydraulic pump with low acoustic emission | □ | □ | □ | On request |
| Non standard colour* | □ | □ | □ | |
| Hand pump kit | □ | □ | □ | |
| Kit pompa a mano | □ | □ | □ | |