



CAR PARKING LIFT
WITHOUT PEOPLE
ON BOARD

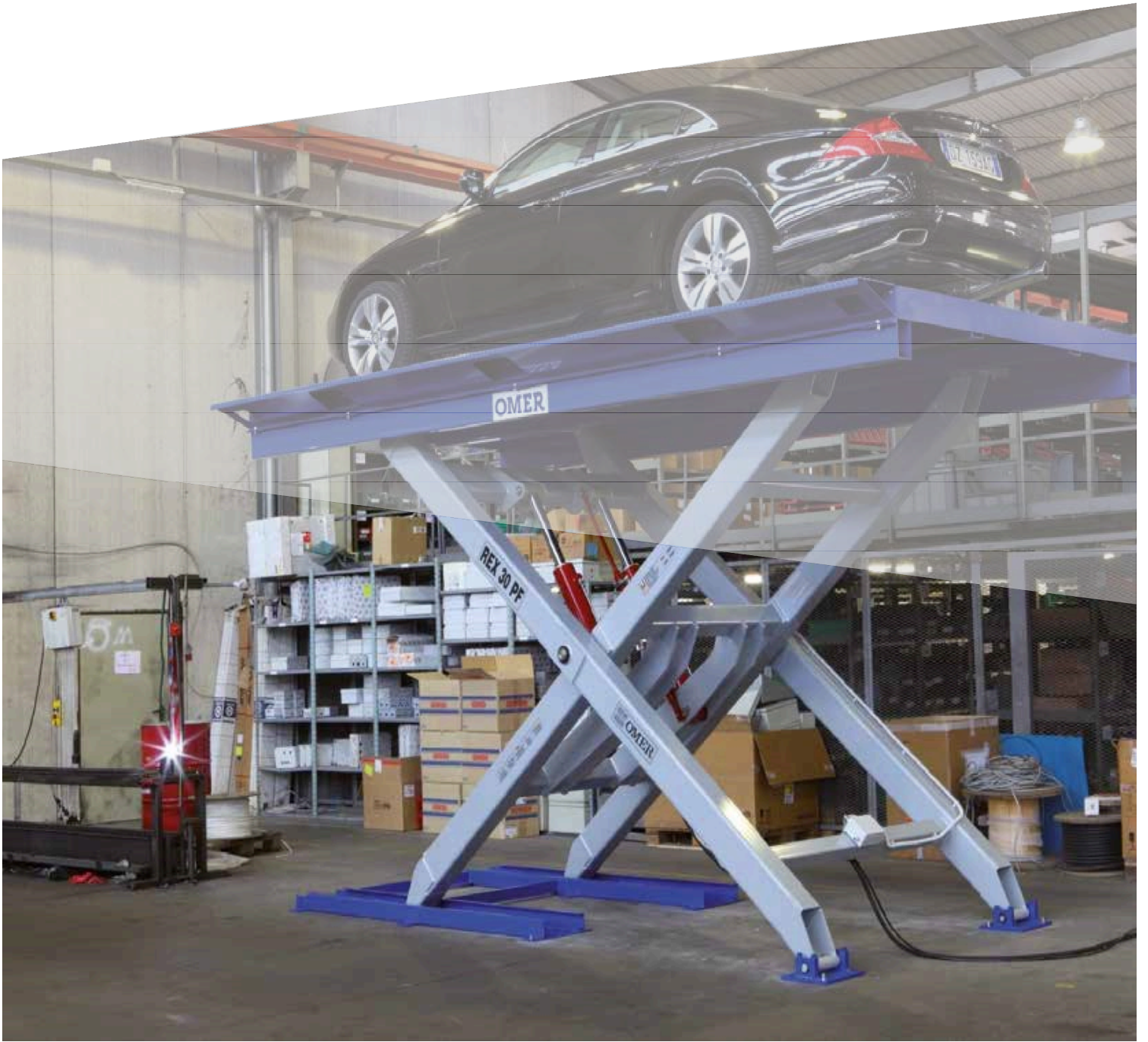
REX PF

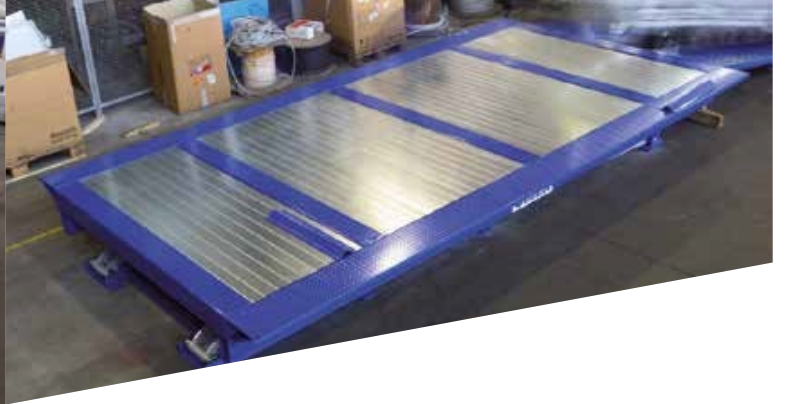




THIS PHOTO SHOWS

how versatile the platform Rex PF (fixed point) is for parking motor vehicles. It can even accommodate vehicles with heavy engines and an extremely long wheel base thanks to the dimensions of the platform (5,200 mm) and its weight bearing capacity (up to 3,000 Kg).





THE PLATFORM COMPRISES

a series of galvanized panels, with a low profile - and light weight. The unit is extremely compact since the platform structure requires a pit of just 510 mm and yet is still extremely sturdy.



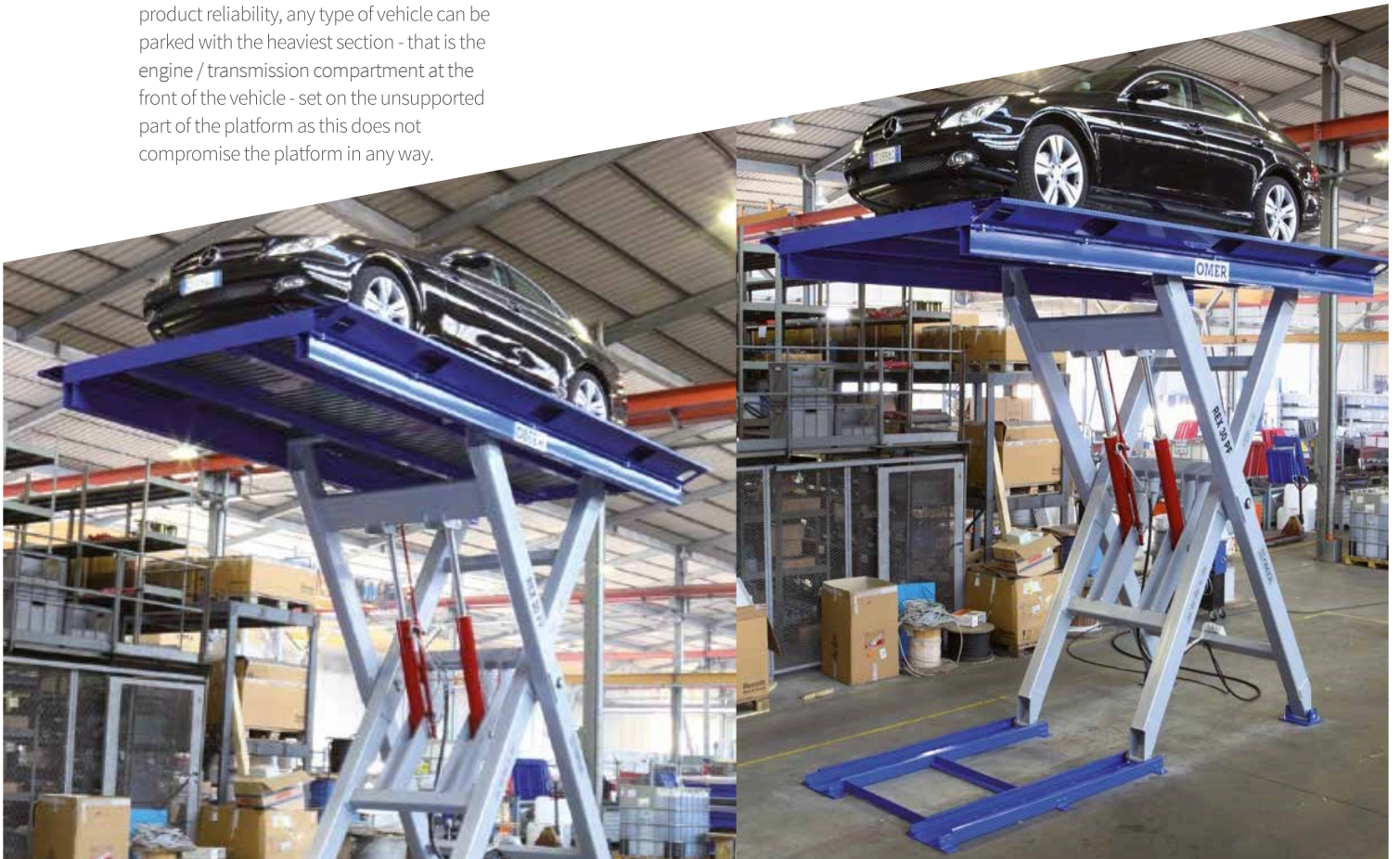


NOTE THE PLATFORM

wheel stop (standard) which ensures correct positioning of the vehicle from the front edge. This detail ensures utmost safety, preventing any abrupt forward movement of the vehicle while the platform is being moved. Another such stop is found at the rear.

GIVEN THE OMER

product reliability, any type of vehicle can be parked with the heaviest section - that is the engine / transmission compartment at the front of the vehicle - set on the unsupported part of the platform as this does not compromise the platform in any way.





THE UNDERLYING

part of the platform is supported by a steel skeleton that ensures the utmost reliability.

By varying the width of the side platform profile (as indicated in the photo) it is possible to adapt the width of the platform to the customer's car, increasing the support space.



THE TWO BASES

on which the Rex PF legs slide are secured to the ground with mechanical anchors. The wheels are installed with wear-resistant plastic bushes that prevent friction and thus extend the life of the unit.

Likewise, the fixed frame has a base secured to the ground with mechanical anchors; it, too, installed with a pin inserted into the wear-resistant plastic bushings. This certainly increases the product lifespan.



THE HYDRAULIC SYSTEM

is composed of two pistons (manufactured by Omer S.p.A.), each fitted with a differential valve able to read differences in oil pressure.

If such changes occur (for example, if a hydraulic connection breaks or there is a major oil leak), the solenoid valve immediately closes the connection between the piston and the hydraulic connections, thus preventing oil from flowing out of the piston.

Moreover, two separate limit switches are set on a shaft to the left of the piston (see photo) and used to regulate platform travel. The third limit switch (seen in the photo) is a safety back-up which cuts in if in the unlikely event of a double failure.



THE JUNCTION BOX

connecting the machine to the electrical control panel is set on the lower spacer of the fixed point leg, thus ensuring utmost accessibility.

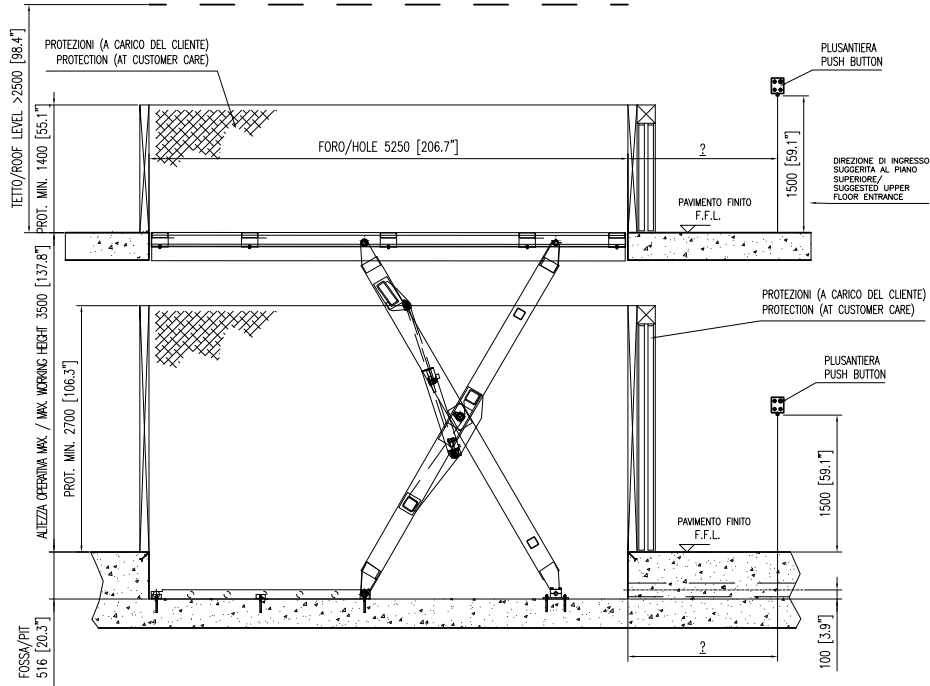
All systems are pre-installed on the unit to aid in a quick and smooth installation.

The photo shows how the electric circuit is perfectly integrated into the machine, while still easily accessible for maintenance.

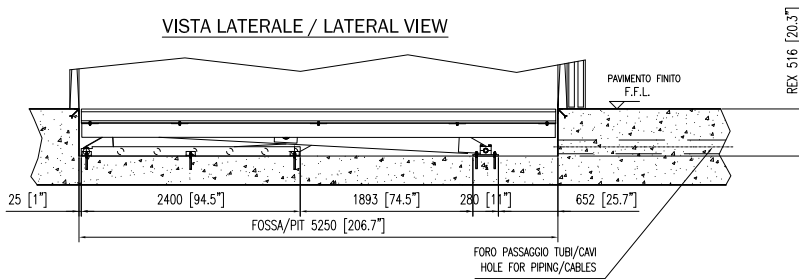


REX

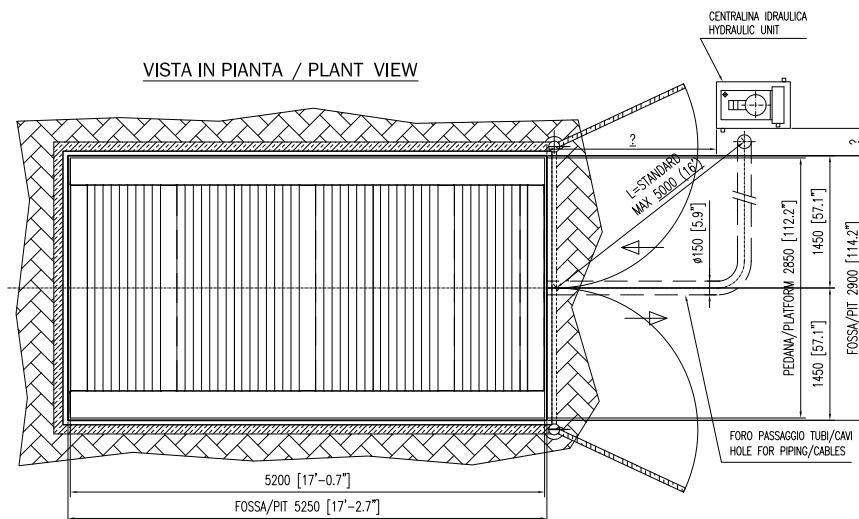
REX 30 PF



VISTA LATERALE / LATERAL VIEW



VISTA IN PIANTA / PLANT VIEW



	Capacity	Standard Lifting Height	Max Lifting Height	Minimum Platform	Standard Platform	Max Platform	Pit	Power	Speed	Power supply	Standard Weight	Notes
REX PF	3000 kg.	3500 mm	3500 mm	2320x4700 mm	2850x5200 mm	3000x5600 mm	516 mm	4 kw	0,06 m/s	400 v / 50 hz	3000 kg.	
	6608 lbs	137,8 inch	137,8 inch	91,3x185 inch	112,2x204,7 inch	118,1x220,5 inch	20,3 inch	5,4 hp	2,4 inch/s	400 v / 50 hz	6608 lbs	

ACCESSORIES

■ STANDARD □ OPTIONAL

DESCRIPTION	REX PF	Notes
Standard Colors BLU RAL 5005 and SILVER RAL 9006	■	
Nr. 1 Standard platform with electrostatics galvanized smooth staves	■	
Max. Travel 3500 mm.	■	
Nr. 2 bases for pit fixing	■	
Nr. 2 Lifting Cylinders	■	
Nr. 2 "Dead man present" push button boards with key	■	
Security control module for sensors and safety locks	■	
Nr. 1 hydraulic pump with motor	■	
Nr. 1 Electrical panel board	■	
Standard power supply 230-400 V/3Ph/50 - 460 V/3Ph/60	■	
Nr. 2 stopping wheel L=745 mm	■	
/ 2 stops	■	
Safety Electromechanical locks	■	
Nylon Package	■	
screws anchors	■	
Non standard platform	□	See the technical data sheet
Predisposition for tileable platform	□	Tiles weight max 70 Kg. per square meter. Pit is modified accordingly with tiling thickness, add intensive use option
bearing wheel for intensive use	□	Advisable for over 10 cycles / day
Additional stop (third stop)	□	
Additional push button board	□	
Additional push button board design style	□	
Push button board in stainless steel	□	
Electro mechanical lock	□	
Electrical supply for Kronenberg or Prudhomme	□	
Additional Electromagnetic sensors	□	
Outside pulse recall for each push button board	□	Applicable just on enclosed shaft
Pulse command return to home position button (just with pulse manouver)	□	Applicable just on enclosed shaft
Automatic repositioning to the floor in case of fire	□	Applicable just on enclosed shaft
Remote control - each receiver	□	Max. ray 5 mt
Remote control - each transmitter	□	Max. ray 5 mt
Flashing light	□	
Siren	□	
2 colors traffic light (Red / Green)	□	
2 colors traffic light (Red / Green) design style	□	

DESCRIPTION	REX PF	Notes
Waterproof galvanized cover for control unit for outdoor installation	<input type="checkbox"/>	
Waterproof push button board IP 54	<input type="checkbox"/>	
Soft Starter	<input type="checkbox"/>	
Hydraulic pump with low acoustic emission	<input type="checkbox"/>	On request
Emergency descent maneuver with hand pump	<input type="checkbox"/>	
Nr. 1 fix handrail H=1.200 mm. (per meter)	<input type="checkbox"/>	
Nr. 1 removable handrail H = 1.200 mm (per meter)	<input type="checkbox"/>	
Photocell barrier car control forward backward H=600 mm	<input type="checkbox"/>	
Control photocells for car's height (Nr. 2)	<input type="checkbox"/>	
Photocell barrier for doors' area control H= 150 mm		
Photocell barrier for doors' area control H= 300 mm	<input type="checkbox"/>	
Laser scanner for control area	<input type="checkbox"/>	
Non standard power supply	<input type="checkbox"/>	On request
Non standard colour*	<input type="checkbox"/>	
Hot dip galvanization	<input type="checkbox"/>	Platform, scissors and bases
Machine on pallet	<input type="checkbox"/>	
Platform staves on pallet	<input type="checkbox"/>	
Control panel crate	<input type="checkbox"/>	